

B6

2 BEDROOM
2 BATHROOM

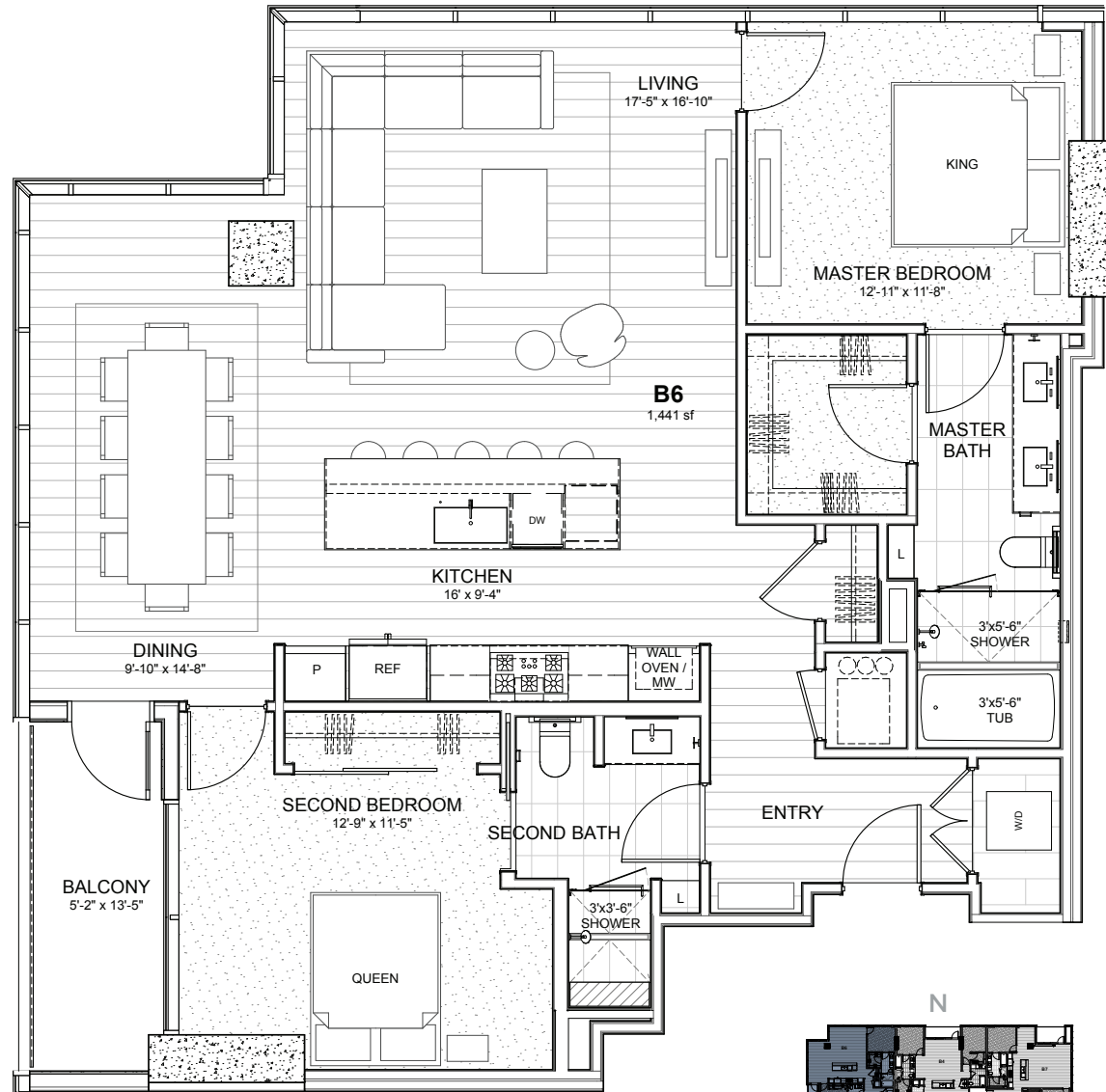
INTERIOR: 1,441 SF
BALCONY: 69 SF
TOTAL: 1,510 SF

EXCLUSIVELY LISTED BY



FOR MORE INFORMATION,
VISIT INDEPENDENTAUSTIN.COM

Floor plans shown are not in any particular scale and are subject to change. All dimensions and areas are approximate and may vary from the final as-built conditions and actual square footage of the unit, and from the description and definition of the "unit" set forth in the Residential Declaration of Condominium Regime for The Independent Condominiums, recorded as Document No. 2017206237 in the Official Public Records of Travis County, Texas, as amended from time to time (the "Residential Declaration"). Please review the Residential Declaration to determine the actual boundaries and dimensions of the unit, which shall control over this floor plan. It is understood and agreed that seller is not building the unit to the precise specifications or designs of this floor plan. Additionally, the unit is being sold unfurnished and will not contain the items shown on this floor plan.



TIER 3 (LEVELS 35-51)